

iwis
antriebssysteme
wir bewegen die welt

Product range



**EURO
CHAIN**[®]
powered by iwis

Eurochain
Drive and conveyor chains

www.iwis.com



Here, not only the price is right, but quality and performance as well



Quality that stands up to any comparison

EUROCHAIN stands for solid, reliable quality – absolutely equal to the top brands of other European suppliers. EUROCHAIN chains are manufactured in accordance with DIN ISO 9001 and have solid rollers as standard. The breaking strength is significantly above the minimum DIN values.

Consistent pre-stretching results in minimum initial elongation. All EUROCHAIN chains have blued outer plates and are labeled with the EUROCHAIN stamp – no no-name product, but quality with a good reputation.

No nasty surprises

The EUROCHAIN logo and plate stamp are internationally protected. This eliminates the possibility of inferior copies and fraudulent imitators.

Money saving aspects

EUROCHAIN chains are provided with an effective initial lubrication (hot lubricant) and are therefore ready to be installed immediately. Temperature ranges from -25 °C up to +250 °C. Possible alternative is a low temperature lubricant from a range of -50 °C up to +50 °C.

iwidur high-performance lubricant **NEW**

The new high-performance lubricant iwidur has been developed specially for iwis' EUROCHAIN product range. With its excellent wear and corrosion protection performance it helps extend the chains' running lifetime. The optimum temperature range is from -25 °C to 80 °C. For more information please ask for our iwidur Flyer.

48-hour delivery service

EUROCHAIN standard lengths (5 m carton boxes or reels) are delivered nationwide within 48 hours from an excellently stocked warehouse. In particularly urgent cases we offer 24-hour service. The EUROCHAIN assortment can also be supplied in customized lengths.

Conveyor chains made-to-order

Our eurochain competence center in Wilnsdorf is focused on customized conveyor chains with wide attachment plates, bent attachment plates and extendend pins. Short delivery times are guaranteed.

Considerable price advantages

In the mid-market segment, EUROCHAIN chains offer considerable price advantages compared to established suppliers. This outstanding value for money makes them even more interesting. EUROCHAIN really saves you money.

”The **EUROCHAIN** chain is a brand-name product. The chains are manufactured according to the strict **iwis** guidelines and are subject to constant quality control on location.”

Product range

Roller chains

- 4 Roller chains according to DIN 8187
- 6 Roller chains with straight side plates according to DIN 8187

Conveyor chains

- 7 Roller chains with narrow bent and straight attachment plates according to DIN 8187
- 8 Roller chains with wide bent and straight attachment plates according to DIN 8187
- 9 Roller chains with extended pins according to DIN 8187

Roller chains ANSI

- 10 Roller chains according to DIN 8188, american standard, ISO 606

Side bow chains

- 10 Side bow chains for transporting, conveying, pulling on curved shape tracks

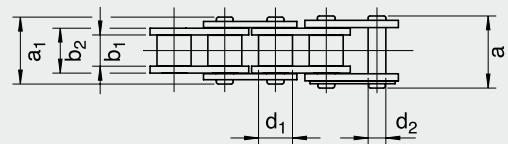
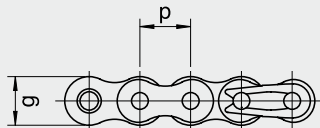


Roller chains

according to DIN 8187, ISO 606

Eurochain designation	DIN/ISO No.	Pitch p		Inner width b_1 min. (mm)	Roller diameter d_1 max. (mm)	Pin diameter d_2 max. (mm)	Pin length chain a_1 (mm)	Pin length conn. link ** a (mm)	Plate height g (mm)	Inner link width b_2 max. (mm)	Transverse pitch e (mm)	Breaking strength DIN min. (N)	Weight per meter (kg)	Article No.
		mm	inches											
EC-4-M	04 B-1	6	-	2,92	3,69	1,78	6,8	7,4	4,97	4,2	-	3.000	0,106	40001782
EC-6-M*	06 B-1	9,525	3/8	5,72	6,35	3,28	13,0	14,2	8,26	8,53	-	9.000	0,45	40000663
EC-6-D*	06 B-2	9,525	3/8	5,72	6,35	3,28	23,8	24,5	8,26	8,53	10,24	16.900	0,80	40002715
EC-6-T*	06 B-3	9,525	3/8	5,72	6,35	3,28	33,5	34,8	8,26	8,53	10,24	24.900	1,20	40002716
EC-8-M	08 B-1	12,700	1/2	7,75	8,51	4,45	16,4	19,0	11,80	11,30	-	17.800	0,68	40000666
EC-8-D	08 B-2	12,700	1/2	7,75	8,51	4,45	30,4	32,9	11,80	11,30	13,92	31.100	1,35	40002720
EC-8-T	08 B-3	12,700	1/2	7,75	8,51	4,45	44,5	47,0	11,80	11,30	13,92	44.500	2,00	40002721
EC-10-M	10 B-1	15,875	5/8	9,65	10,16	5,08	18,8	21,0	14,73	13,28	-	22.200	0,91	40000669
EC-10-D	10 B-2	15,875	5/8	9,65	10,16	5,08	35,8	37,8	14,73	13,28	16,59	44.500	1,84	40002725
EC-10-T	10 B-3	15,875	5/8	9,65	10,16	5,08	52,4	54,4	14,73	13,28	16,59	66.700	2,75	40002726
EC-12-M	12 B-1	19,050	3/4	11,68	12,07	5,72	21,8	23,7	16,10	15,62	-	28.900	1,25	40000672
EC-12-M-V***	12 B-1 V	19,050	3/4	11,68	12,07	5,72	25,95	28,05	15,80	17,91	-	40.000	1,49	40000880
EC-12-D	12 B-2	19,050	3/4	11,68	12,07	5,72	41,5	43,5	16,10	15,62	19,46	57.800	2,50	40002730
EC-12-T	12 B-3	19,050	3/4	11,68	12,07	5,72	61,0	63,0	16,10	15,62	19,46	86.700	3,80	40002731

Nickel-plated chains are available on request * with straight side plates ** a = conn. link with spring clip *** heavy duty



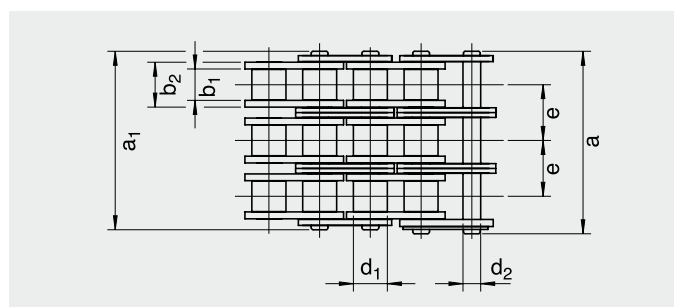
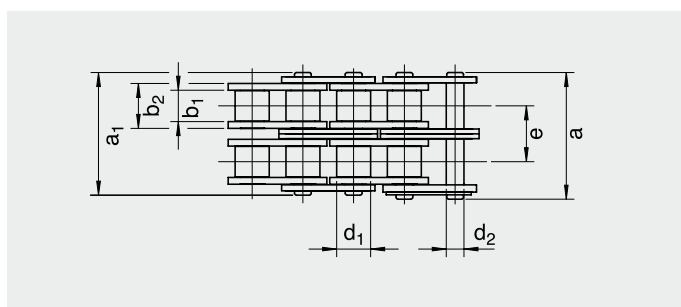


Roller chains

according to DIN 8187, ISO 606

Eurochain designation	DIN/ISO No.	Pitch p		Inner width b_1 min. (mm)	Roller diameter d_1 max. (mm)	Pin diameter d_2 max. (mm)	Pin length chain a_1 (mm)	Pin length conn. link ** a (mm)	Plate height g (mm)	Inner link width b_2 max. (mm)	Transverse pitch e (mm)	Breaking strength DIN min. (N)	Weight per meter (kg)	Article No.
		mm	inches											
EC-16-M	16 B-1	25,40	1	17,02	15,88	8,28	36,1	36,9	21,0	25,4	-	60.000	2,70	40002732
EC-16-D	16 B-2	25,40	1	17,02	15,88	8,28	68,0	68,0	21,0	25,4	31,88	106.000	5,40	40002733
EC-16-T	16 B-3	25,40	1	17,02	15,88	8,28	99,9	100,7	21,0	25,4	31,88	160.000	8,00	40002734
EC-20-M	20 B-1	31,75	1 1/4	19,56	19,05	10,19	43,2	45,3	26,4	29,0	-	95.000	3,58	40005137
EC-20-D	20 B-2	31,75	1 1/4	19,56	19,05	10,19	79,0	81,8	26,4	29,0	36,40	170.000	7,14	40005932
EC-20-T	20 B-3	31,75	1 1/4	19,56	19,05	10,19	116,0	118,3	26,4	29,0	36,40	250.000	10,70	40005207
EC-24-M	24 B-1	38,10	1 1/2	25,40	25,40	14,63	53,4	60,0	33,4	37,9	-	160.000	6,86	40005206
EC-24-D	24 B-2	38,10	1 1/2	25,40	25,40	14,63	101,0	108,4	33,4	37,9	48,36	280.000	13,68	40005210
EC-24-T	24 B-3	38,10	1 1/2	25,40	25,40	14,63	150,0	156,8	33,4	37,9	48,36	425.000	20,50	40005212
EC-32-M	32 B-1	50,80	2	30,99	29,21	17,81	67,4	71,9	42,2	45,5	-	250.000	9,33	40005133
EC-32-D	32 B-2	50,80	2	30,99	29,21	17,81	126,0	130,4	42,2	45,5	58,55	450.000	18,60	40005214
EC-32-T	32 B-3	50,80	2	30,99	29,21	17,81	184,0	189,0	42,2	45,5	58,55	670.000	27,87	40002230

Nickel-plated chains are available on request ** a = conn. link with spring clip

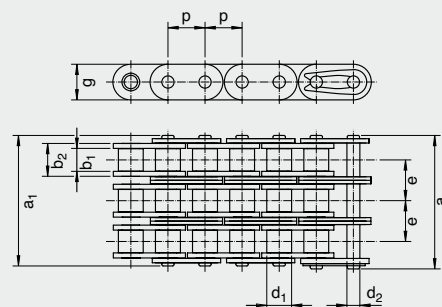
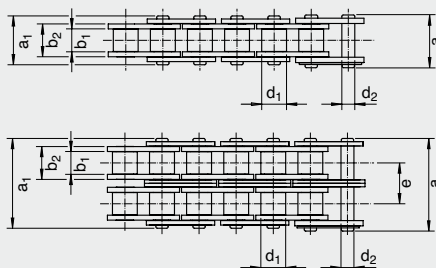




Roller chains with straight side plates according to DIN 8187, ISO 606

Eurochain designation	DIN/ISO No.	Pitch p		Inner width b_1 min.		Roller diameter d_1 max. (mm)	Pin diameter d_2 max. (mm)	Pin length chain a_1 (mm)	Pin length conn. link ** a (mm)	Plate height g (mm)	Inner link width b_2 max. (mm)	Transverse pitch e (mm)	Breaking strength DIN min. (N)	Weight per meter (kg)	Article No.
		mm	inches	mm	inches										
EC-6-M GL	06 B-1	9,525	3/8	5,72	7/32	6,35	3,28	13,0	15,12	8,2	8,53	-	8.900	0,45	40000663
EC-6-D GL	06 B-2	9,525	3/8	5,72	7/32	6,35	3,28	23,8	26,15	8,2	8,53	10,24	16.900	0,80	40002715
EC-6-T GL	06 B-3	9,525	3/8	5,72	7/32	6,35	3,28	33,5	34,80	8,2	8,53	10,24	24.900	1,20	40002716
EC-8-M GL	08 B-1	12,700	1/2	7,75	5/16	8,51	4,45	16,4	19,00	11,8	11,30	-	17.800	0,68	40000732
EC-8-D GL	08 B-2	12,700	1/2	7,75	5/16	8,51	4,45	30,4	32,90	11,8	11,30	13,92	31.100	1,35	40000733
EC-8-T GL	08 B-3	12,700	1/2	7,75	5/16	8,51	4,45	44,5	47,00	11,8	11,30	13,92	44.500	2,00	40000734
EC-10-M GL	10 B-1	15,875	5/8	9,65	3/8	10,16	5,08	18,8	21,00	13,9	13,28	-	22.200	0,91	40000735
EC-10-D GL	10 B-2	15,875	5/8	9,65	3/8	10,16	5,08	35,8	36,80	13,9	13,28	16,59	44.500	1,84	40000736
EC-10-T GL	10 B-3	15,875	5/8	9,65	3/8	10,16	5,08	52,4	54,40	13,9	13,28	16,59	66.700	2,75	40000737
EC-12-M GL	12 B-1	19,050	3/4	11,68	7/16	12,07	5,72	21,8	23,70	16,1	15,62	-	28.900	1,25	40000738
EC-12-D GL	12 B-2	19,050	3/4	11,68	7/16	12,07	5,72	41,5	43,50	16,1	15,62	19,46	57.800	2,50	40000739
EC-12-T GL	12 B-3	19,050	3/4	11,68	7/16	12,07	5,72	61,3	63,00	16,1	15,62	19,46	86.700	3,80	40000740
EC-16-M GL	16 B-1	25,400	1	17,02	-	15,88	8,28	36,1	36,90	20,3	25,40	-	60.000	2,70	40001162
EC-16-D GL	16 B-2	25,400	1	17,02	-	15,88	8,28	68,0	68,80	20,3	25,40	31,88	106.000	5,40	40001690
EC-16-T GL	16 B-3	25,400	1	17,02	-	15,88	8,28	99,8	100,70	20,3	25,40	31,88	160.000	8,00	40001695
EC-20-M GL	20 B-1	31,75	1 1/4	19,56	-	19,05	10,19	43,2	49,3	26,4	29,0	-	95.000	3,58	40004229
EC-20-D GL	20 B-2	31,75	1 1/4	19,56	-	19,05	10,19	79,0	85,1	26,4	29,0	36,45	170.000	7,14	40006045
EC-24-M GL	24 B-1	38,10	1 1/2	25,40	1	25,40	14,63	53,4	60,0	33,4	37,9	-	160.000	6,86	40006048
EC-24-D GL	24 B-2	38,10	1 1/2	25,40	1	25,40	14,63	101,0	107,6	33,4	37,9	48,36	280.000	13,68	40006051
EC-32-M GL	32 B-1	50,80	2	30,99	-	29,21	17,81	67,4	75,3	42,2	45,5	-	250.000	9,33	40004554

** a = conn. link with spring clip





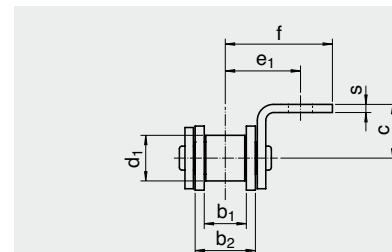
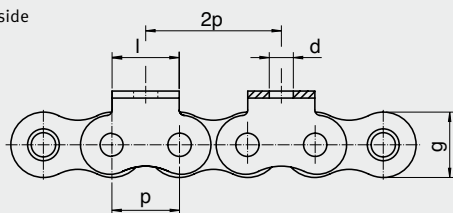
Roller chains with narrow bent and straight attachment plates

based on EUROCHAIN roller chains complying with DIN 8187, ISO 606

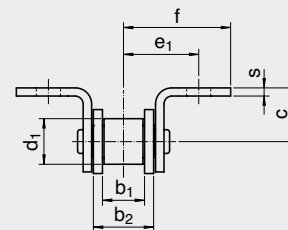
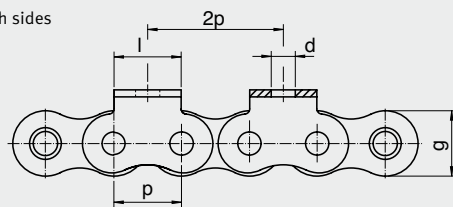
Eurochain designation	Pitch p		Dimensions of attachments**					a (mm)	b (mm)	c (mm)	d (mm)	e ₁ (mm)	f (mm)	l (mm)	s (mm)
	mm	inches	Inner width b ₁ min. (mm)	Inner link width b ₂ max. (mm)	Roller diameter d ₁ max. (mm)	Plate height g max. (mm)	Breaking strength DIN min. (N)								
EC-6-M*	9,525	3/8	5,72	8,53	6,35	8,2	8.900	9	13,8	6,5	3,5	9,3	13,7	8	1,3
EC-8-M	12,7	1/2	7,75	11,3	8,51	11,8	17.800	14,7	20,3	10	4,5	12,9	18,5	12,5	1,3
EC-10-M	15,875	5/8	9,65	13,28	10,16	14,73	22.200	17,2	26,7	10	5,5	16,9	26,4	15	1,6
EC-12-M	19,05	3/4	11,68	15,62	12,07	16,1	28.900	18,7	29	11	6,6	19,2	29,5	18,5	1,8
EC-16-M	25,4	1	17,02	25,4	15,88	20,3	60.000	28,6	41,5	18	9	28,7	41,6	25	3,1

* only with straight side plates ** other dimensions are available on request

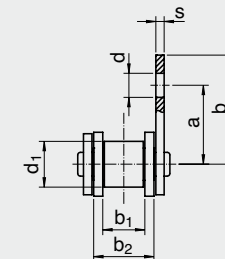
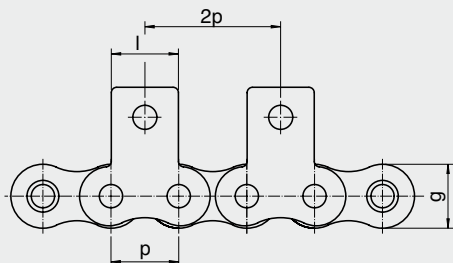
A
Bent attachment plate on one side
EC-2020.1



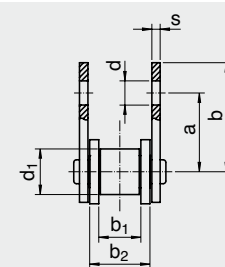
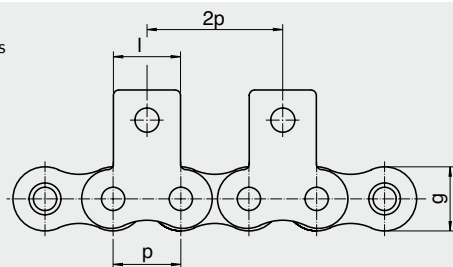
B
Bent attachment plates on both sides
EC-2020.1



D
Attachment plate on one side
EC-1020.1



E
Attachment plate on both sides
EC-1020.1





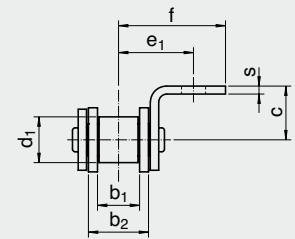
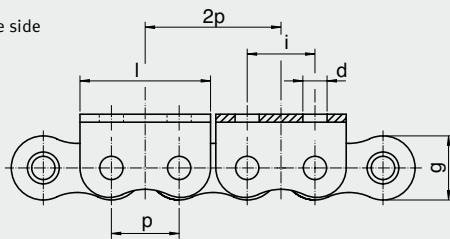
Roller chains with wide bent and straight attachment plates

based on EUROCHAIN roller chains complying with DIN 8187, ISO 606

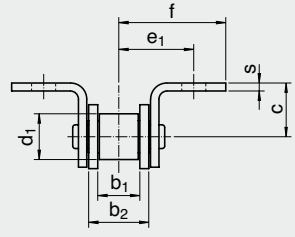
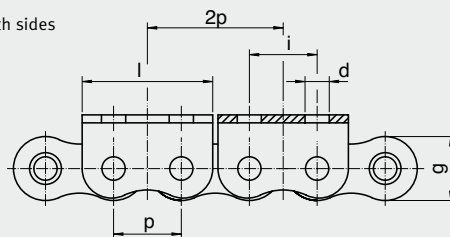
Eurochain designation Nr.	Pitch p		Dimensions of attachments**					Breaking strength DIN min. (N)	b (mm)	c (mm)	d (mm)	e ₁ (mm)	f (mm)	i (mm)	k (mm)	l (mm)	s (mm)
	mm	inches	Inner width b ₁ min. (mm)	Inner link width b ₂ max. (mm)	Roller diameter d ₁ max. (mm)	Plate height g max. (mm)	Inner link width b ₂ max. (mm)										
EC-6-M*	9,525	3/8	5,72	8,53	6,35	8,2	8.900	12,6	5,7	3,2	10,3	13,7	9,525	9,2	18,2	1,3	
EC-8-M	12,7	1/2	7,75	11,3	8,51	11,8	17.800	20,3	10	4,5	12,9	18,5	12,7	14,7	24,3	1,3	
EC-10-M	15,875	5/8	9,65	13,28	10,16	14,73	22.200	26,7	10	5,5	16,9	26,4	15,9	17,2	29	1,6	
EC-12-M	19,05	3/4	11,68	15,62	12,07	16,1	28.900	29	11	6,6	19,2	29,5	19,1	18,7	33,2	1,8	
EC-16-M	25,4	1	17,02	25,4	15,88	20,3	60.000	41,3	18	9	28,7	41,6	25,4	28,4	45,6	3,1	

* Only with straight side plates ** other dimensions are available on request

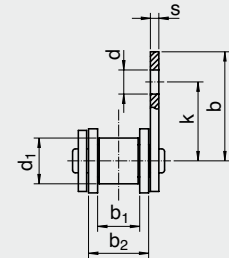
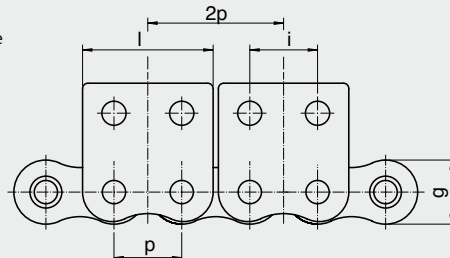
A2
Bent attachment plate on one side
EC-2030.2



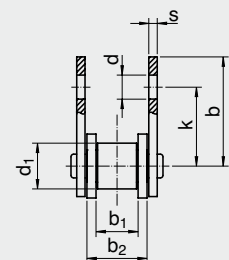
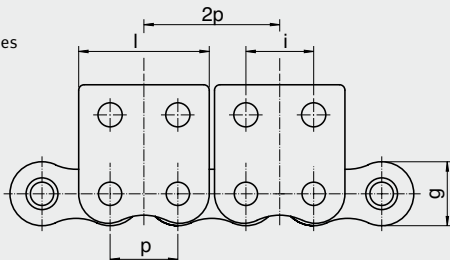
B2
Bent attachment plate on both sides
EC-2030.2



D2
Attachment plate on one side
EC-1030.2



E2
Attachment plate on both sides
EC-1030.2



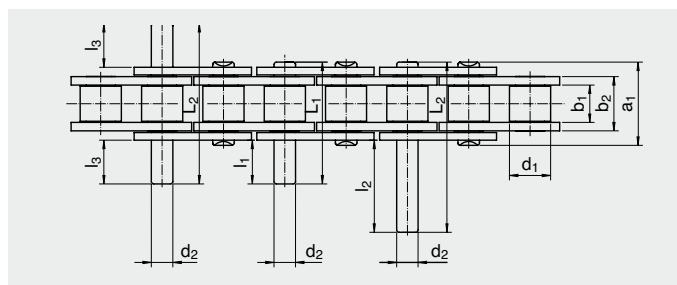
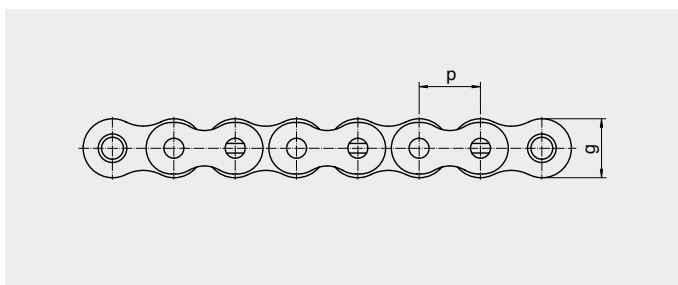


Roller chains with extended pins

based on EUROCHAIN roller chains complying with DIN 8187, ISO 606

Eurochain designation	Pitch p		Inner width b_1 min. (mm)	Inner link width b_2 max. (mm)	Roller diameter d_1 max. (mm)	Pin diameter d_2 h9 (mm)	Plate height g max. (mm)	Breaking strength DIN min. (N)	Pin length a_1 max. (mm)	Pin length L_1 max. (mm)	Pin length L_2 max. (mm)	Pin extension length		
	mm	inches										l_1 max. (mm)	l_2 max. (mm)	l_3 max. (mm)
EC-6-M*	9,525	3/8	5,72	8,53	6,35	3,28	8,2	8.900	13,0	23,8	33,5	11,4	21,3	11,0
EC-8-M	12,700	1/2	7,75	11,30	8,51	4,45	11,8	17.800	16,4	30,4	44,5	14,5	29,1	15,2
EC-10-M	15,875	5/8	9,65	13,28	10,16	5,08	14,7	22.200	18,8	35,8	52,4	17,9	34,6	17,8
EC-12-M	19,050	3/4	11,68	15,62	12,07	5,72	16,1	28.900	21,8	41,5	61,0	20,7	40,4	20,8
EC-16-M	25,400	1	17,02	25,40	15,88	8,28	20,3	60.000	36,1	68,0	99,8	34,0	65,8	34,0

* Only with straight side plates

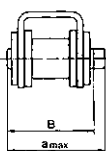


Roller chains with U-shaped attachments

for fitting to EUROCHAIN roller chains with U-shaped attachments: 3030.2 and 3030.9

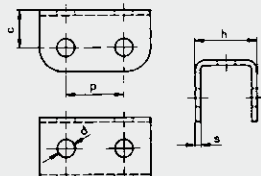
Eurochain designation	p (mm)	max B (mm)	a_{max} (mm)	c (mm)	d (mm)	h (mm)	k (mm)	s (mm)	Article No.	
									Attachment 3030.2	Attachment 3030.9
EC-8-M	12,700	19,5	22,0	8,3	4,48	14,5	4,0	1,3	40003131	40003125
EC-8-D	12,700	33,5	35,9	8,3	4,48	28,4	4,0	1,3	40003442	40003127
EC-10-M	15,875	21,9	24,0	10,5	5,15	16,4	2,5	1,3	40003132	40003128
EC-10-D	15,875	38,9	40,8	10,5	5,15	33,0	2,5	1,3	40003443	40003445
EC-12-M	19,050	25,9	27,7	13,0	5,79	19,0	8,0	1,8	40003134	40003129
EC-12-D	19,050	45,4	47,5	12,0	5,79	39,0	7,5	1,8	40003444	40003447
EC-16-M	25,400	39,3	40,9	15,4	8,40	30,0	6,0	1,8	40003135	40003130

CHAIN WIDTH

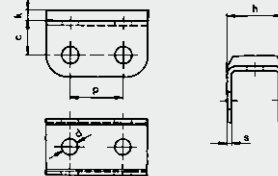


When U-shaped attachments are ditted between the inner and outer plates the chain width increases above standard.

No. 3030.2 with standard attachment hole



No. 3030.9 with rubber cover



Cover material: elastomer, hardness 60-65 shore, acidresisting, non-abrasive, temperature up to 90°C, heat-resistant, colour white

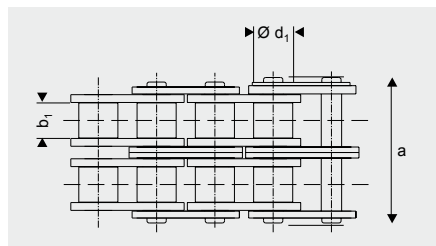
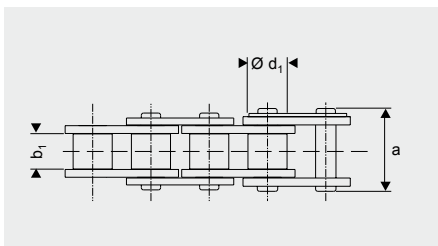


Roller chains

according to DIN 8188, american standard, ISO 606

Eurochain designation	DIN/ISO No.	Ref. Number	mm	Pitch p Inch (Zoll)	Inner width b_1 min. (mm)	Roller diameter d_1 max. (mm)	Pin diameter d_2 max. (mm)	Pin length chain a_1 (mm)	Pin length conn. link * a (mm)	Plate height g (mm)	Transverse pitch e (mm)	Breaking strength DIN min. (N)	Weight per 1 m (kg)	Article No. 10ft. plus conn. link
Single chains														
EC8M-A	08 A-1	ANSI 40-1	12,70	1/2	7,85	7,92	3,98	17,80	21,00	12,00	-	13.900	0,65	40005625
EC10M-A	10 A-1	ANSI 50-1	15,875	5/8	9,40	10,16	5,09	21,80	25,00	15,00	-	21.800	1,09	40006189
EC10M-A GL	10 A-1	ANSI 50-1	15,875	5/8	9,40	10,16	5,09	21,80	25,00	15,00	-	21.800	1,09	40004763
EC12M-A	12 A-1	ANSI 60-1	19,05	3/4	12,58	11,91	5,96	26,90	31,00	18,00	-	31.300	1,51	40006265
EC12M-AH	12 AH-1	ANSI 60-1 H	19,05	3/4	12,58	11,91	5,98	26,60	30,7	17,10	-	31.300	1,72	40005802
EC16M-A	16 A-1	ANSI 80-1	25,40	1	15,75	15,87	7,94	33,50	38,00	24,10	-	55.600	2,65	40005641
EC16M-A GL	16 A-1	ANSI 80-1	25,40	1	15,75	15,87	7,94	33,50	38,00	24,10	-	56.800	2,65	40005519
EC16M-AH**	16 AH-1	ANSI 80-1 H	25,40	1	15,75	15,87	7,94	35,80	37,80	24,20	-	55.600	3,07	40005807
Double chains														
EC8D-A	08 A-2	ANSI 40-2	12,70	1/2	7,85	7,92	3,98	32,30	36,20	12,00	14,38	27.800	1,28	40005646
EC10D-A	10 A-2	ANSI 50-2	15,575	5/8	9,40	10,16	5,09	39,90	44,00	15,00	18,11	43.600	2,10	40005651
EC12D-A	12 A-2	ANSI 60-2	19,05	3/4	12,58	11,91	5,96	49,80	54,40	18,00	22,78	62.600	3,01	40005656
EC16D-A	16 A-2	ANSI 80-2	25,40	1	15,75	15,87	7,94	62,70	68,10	24,10	29,29	111.200	5,24	40005661

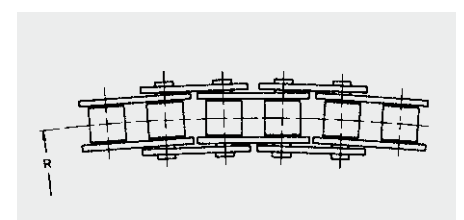
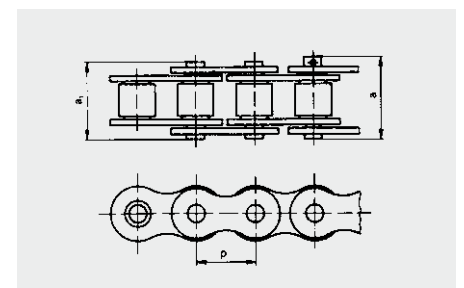
* a = conn. link with spring clip
** heavy duty



Side bow chains

Transporting, conveying, pulling on curved shape tracks

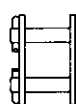
Eurochain designation	Pitch p (mm)	a_1 (mm)	Outer width a (mm)	Minimum radius R (mm)	Breaking strength iwis FB (N)	Continuous (N)	Transient (N)	Weight (kg/m)	Connecting links available	Article No.
EC-8-MSB	12,7	16,8	17,8	400	9.500	720	1800	0,65	2, 4, 8	40002901



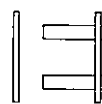
CHAIN COMPONENTS AND CONNECTING LINKS



Nr. 2 Inner links
Standard designation B



Nr. 4 Connecting link with split pin fastening
Standard designation S



Nr. 8 Outer link
Standard designation A



iwis Customer Service

CallBack Tel: +49 89 76909-1600 Fax: -1229

sales-muenchen@iwis.com

iwis
antriebssysteme
wir bewegen die welt



iwis Präzisionsketten
High precision chains



Handbuch Kettentechnik
Engineering Manual



MEGAlife Rollenketten
MEGAlife Roller chains



Transferketten
Transfer chains



Spitzlaschenketten
Spike chains



Gripketten
Grip chains



Scharnierbandketten
Flat Top chains



Kettenräder und
Antriebskomponenten
Sprockets and
drive components



Rollen- und Förderketten
Roller- and conveyor chains



Landmaschinenketten
Agricultural chains



Sämtliche Produktkataloge und Flyer, sowie unser iwis Kettenhandbuch können Sie hier herunterladen:
iwis.com/kataloge

All product catalogs and flyers, as well as our iwis Engineering Manual can be downloaded on our website:
iwis.com/catalogs

Our subsidiaries

Germany

iwis antriebssysteme GmbH & Co. KG
Albert-Roßhaupter-Straße 53
81369 München
Tel. +49 89 76909-1500
Fax +49 89 76909-1198
sales@iwis.com

Germany

iwis antriebssysteme GmbH
Essener Straße 23
57234 Wilnsdorf
Tel. +49 2739 86-0
Fax +49 2739 86-22
sales-wilnsdorf@iwis.com

Germany

iwis agrisystems
Schützenweg 5
36205 Sontra
Tel. +49 5653 9778-0
Fax +49 5653 9778-26
agrisystems@iwis.com

Great Britain

iwis drive systems Ltd.
Unit 8c Bloomfield Park
Bloomfield Road, Tipton
West Midlands, DY4 9AP
Tel. +44 12 15213600
Fax +44 12 15200822
salesuk@iwis.com

France

iwis systèmes de transmission
10, rue du Luxembourg
69330 Meyzieu
Tel. +33 4374515-70
Fax +33 4374515-71
salesfr@iwis.com

Switzerland

iwis AG Kettentechnik
Bahnweg 4 (Postfach)
5504 Othmarsingen
Tel. +41 62 8898999
Fax +41 62 8898990
info@iwis-ketten.ch

Italy

iwis antriebssysteme Italia
Tel. +39 340 9296142
Fax +49 89 7690949-1726
salesit@iwis.com

China

iwis drive systems (Suzhou) Co., Ltd.
No. 266 LvliangShan Road
215153 Suzhou SND
Tel. +86 512 8566-3020
Fax +86 512 8566-3009
salescn@iwis.com

USA

iwis drive systems, LLC
Building 100, 8266 Zionsville Road
Indianapolis, IN 46268
Tel. +1 317 821-3539
Fax +1 317 821-3569
sales@iwisusa.com

Canada

iwis drive systems, Inc.
101-19097, 26th Avenue,
Surrey BC V3Z 3V7
Tel. +1 604 560-6395
Fax +1 604 560-6397
salesca@iwisusa.com

Brazil

iwis Sistemas de Transmissão
de Energia Mecânica Ltda.
Rua Bento Rosa, nº 1816
Bairro Hidráulica
95.900-000 Lajeado, RS
Tel. +55 51 3748-7402
salesbrazil@iwis.com

South Africa

iwis drive systems, (Pty) Ltd
Unit 3, 127 Koornhof Road
Meadowdale, 1613
Tel. +27 11 392-2306
Fax +27 11 392-3295
salessa@iwis.com

Czechia

iwis antriebssysteme spol. s r.o.
Písecká 893
38601 Strakonice
Tel. +420 383 411811
Fax +420 383 321695
salescz@iwis.com

Turkey

iwis tahrik sistemleri sanayi ve ticaret ltd.şti
Kağıthane Merkez Mah. Bağlar Cad. No: 14
Kağıthane Ofis Park 4C-Blok, TT04-FF2
34406 Kağıthane-İstanbul
Tel. +90-212-939 3843
Fax +90-212 939 3701
salestr@iwis.com

www.iwis.com

iwis
antriebssysteme
wir bewegen die welt

Your sales representative

